

# Elbo Tool User Guide

To prepare for mounting the Elbo Tool place the tailstock 30" from the spindle and the banjo 15" from the tailstock . Advance the quill 3/4" of an inch, Leave the quill clamp loose . Position the tool rest 1/2" below center.

1. Hold the folded Elbo Tool (minus the cutting bar) in your left hand and slide the clamp onto the quill.



*Make sure the clamp lever handle is in the 'open' position.*

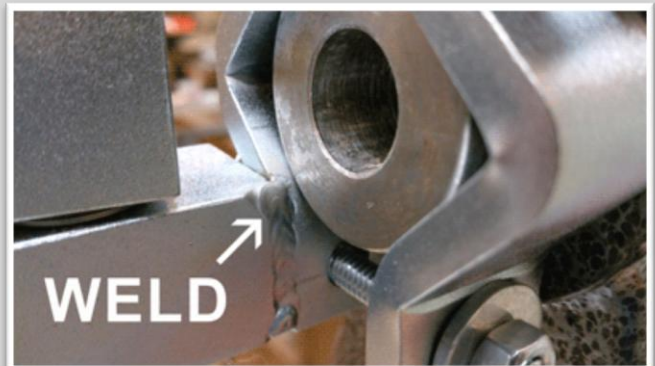


2. Hold the lower bolt head with your left index finger and hand tighten the nut with your right hand.



**3. Make sure the weld on the clamp block does not touch the quill.**

*If your Elbo is way off center check the weld first. If the weld touches the quill it will deflect the end of the cutter up or down from center. This is often the case for misalignment.*



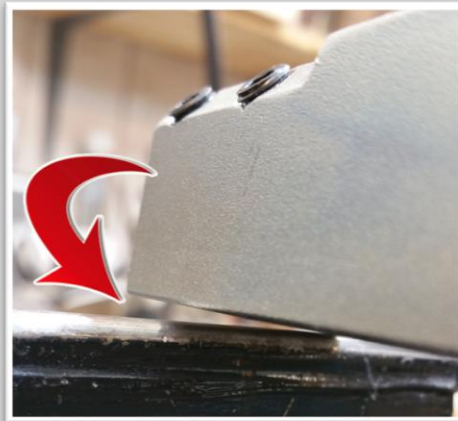
4. Tighten the lower nut until moderate force closes the clamp lever.

*If you apply too much force it could damage the lever. Too little and the Elbo can slip and rotate. The clamp steel is softer than your quill so it will deflect rather than score or damage the quill. This deflection also gives you the ability to tweak the final height of the cutting tip in steps 5-7.*



5. Extend the Elbo Tool until the tool holder arm is resting on the tool rest.

*Notice the gap between the tool and the tool rest. This shows that the tool is not registered parallel to the lathe. It will not work properly in this alignment.*



6. Loosen the clamp lever handle and apply downward pressure on the tool holder arm until it lays flat on the tool rest.



7. While still applying pressure tighten the Elbo Tool clamp lever and lock down the quill handle.

*Your Elbo Tool is now registered parallel to the lathe.*



8. Insert the tool holder bar. Tighten the back Allen screw first to insure that the tool holder bar is inserted completely. Tighten the second screw.



9. If there is not a cutting tip in the holder install it now. Move the tool rest under the tool holder bar and adjust upward until the tool tip is on center.

**You are now ready to use the Elbo Tool!**

*If the tool tip is above center lower your tool rest about 1" below center and repeat steps 5 -7. This should place the cutting tip below center. Never use the tool if the tip is above center!*

